

GRAINDELL



The International Rice Research Institute or IRRI is charting new territory. *Graindell*, its initial venture into children's book publishing—produced with international and multi-awarded children's book writer Rene O. Villanueva, and Redge A. Abos, a talented young children's book illustrator—is the first in the Jollygrain Book Series.

The story of Graindell, the "planetoid shaped like an eye", is about the friendship and adventures of two boys, Abu and Thor, who made their dreams come true through hard work, industry, and altruism, and by standing up for their principles. IRRI's hope is that this book will make our young and old readers appreciate the scientific effort that goes into producing better-yielding, better-growing, and better-tasting jollygrain for all the rice-eating people of planet Earth.

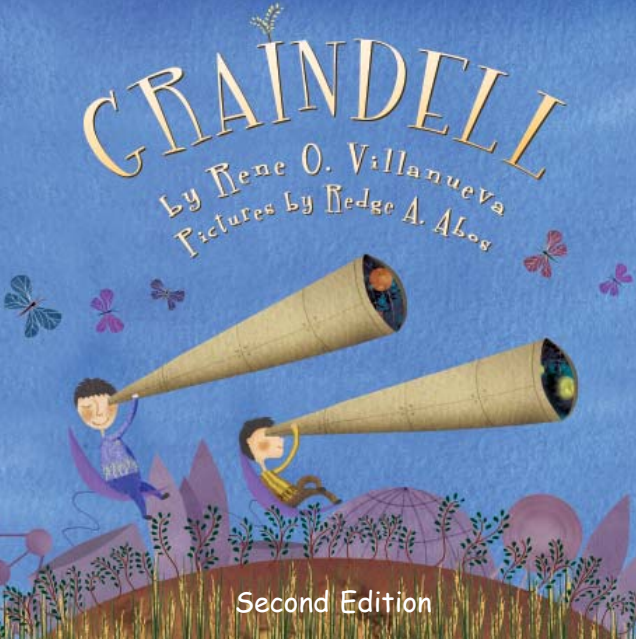


ISBN 971-22-0176-7



GRAINDELL

By Rene O. Villanueva
Pictures by Redge A. Abos



Second Edition



About the Author

RENE O. VILLANUEVA is among the pioneers in writing children's books in the Philippines when the interest in local children's literature was revived in the late 1970s. He has published more than 50 books for children and teens. He has also written plays and scripts for young readers. *Graindell*, his first children's book originally written in English, celebrates the most-awaited coming of his first grandchild.

The Jollygrain Book Series



Copyright © 2002 International Rice Research Institute, Los Baños, Philippines
Second edition 2004. International Rice Research Institute, Los Baños, Philippines

All rights reserved. No part of this book, its characters, icons, and other visual elements may be reproduced or stored in a retrieval system, or transmitted in any form or by any means, electronic, mechanical, photocopying, recording, or otherwise, without written permission of the publisher. For information regarding permission, write to IRRI, Attention: Communication and Publications Services, DAPO Box 7777, Metro Manila, Philippines.

Phone: (63-2) 580-5600, 844-3351 to 53

Fax: (63-2) 580-5699

Web sites:

IRRI Home (www.irri.org)

IRRI Library (ricelib.irri.cgiar.org)

Rice Knowledge Bank (www.knowledgebank.irri.org)

Rice facts (www.riceweb.com)

Riceworld Museum and Learning Center (www.riceworld.org)

Graindell: www.Graindell.com

About the Artist



REDGE A. ABOS is 100% female, contrary to what her name suggests. A multimedia art director, illustrator, and book designer, she has worked and continues to work with a number of non-government organizations, children's book publishers, and educational institutions. Her source of inspiration as a children's book artist is Bah, a stuffed sheep she takes with her wherever she goes.

Match the words in the left column with those in the right column. Then, imagine and draw your own version of the words.

planetoid

rice

merryscope

tractor

diggerdome

telescope

spacecium

dinosaur

jollygrain

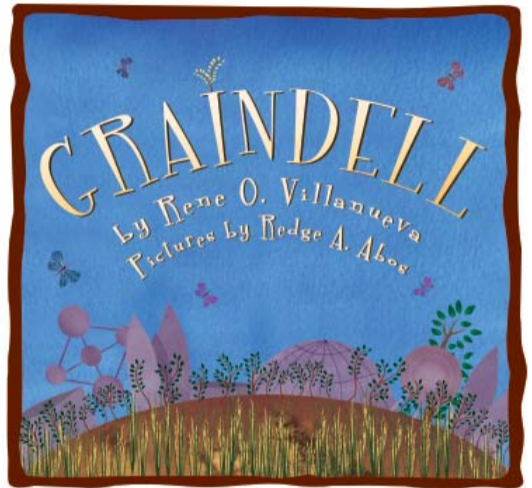
bird

momitour

spaceship

averest

earth



International Rice Research Institute

About IRRI

The International Rice Research Institute (IRRI) was established in 1960. It is one of the 15 nonprofit international research centers supported by the Consultative Group on International Agricultural Research (CGIAR).

IRRI's mission is to improve the well-being of present and future generations of rice farmers and consumers, particularly those with low incomes, while preserving natural resources.

In 2004, IRRI joins the rest of the world in observing the United Nations International Year of Rice (IYR). The IYR seeks to "promote the ecological, social, and cultural diversity of rice-based production systems as a prism through which key global concerns can be addressed, such as poverty and hunger alleviation, undernourishment, food safety, environmental protection," and other important issues.

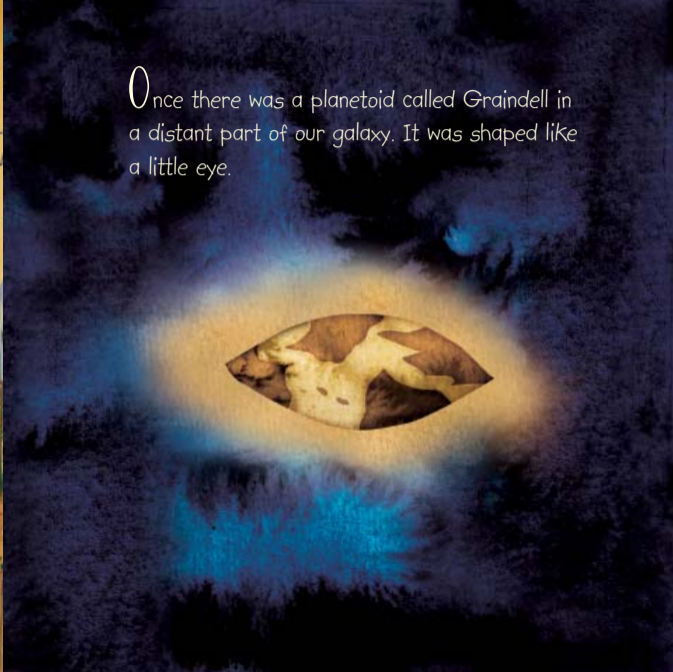
The Jollygrain Book Series

The series aims to highlight, popularize, and promote important concepts, aspects, and issues related to rice and rice growing. It intends to promote appreciation, which is life to half the world's people, and love and nurturing for the land, crops, nature and the environment, science, other cultures, and one's community. The series is dedicated to all the children who will inherit our world, and who make up the majority of the world's more than 3 billion rice consumers.

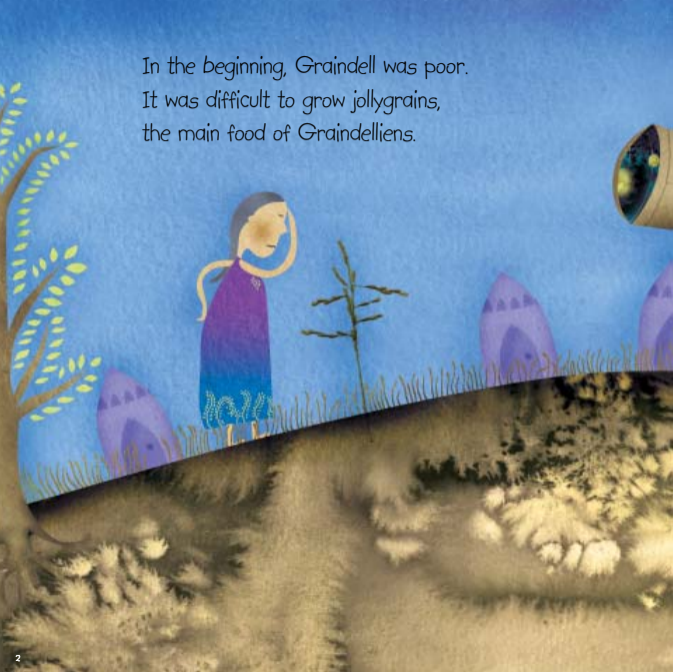




Once there was a planetoid called Graindell in a distant part of our galaxy. It was shaped like a little eye.



In the beginning, Graindell was poor.
It was difficult to grow jollygrains,
the main food of Graindelliens.



From that time on, the Graindelliens
never had to go hungry ever again!



Thor hugged Abu and the averest tightly. "I want to live in my home planetoid." Thor moved all his property and wealth to Graindell. He helped his fellow Graindelliens make their planetoid richer and more developed.



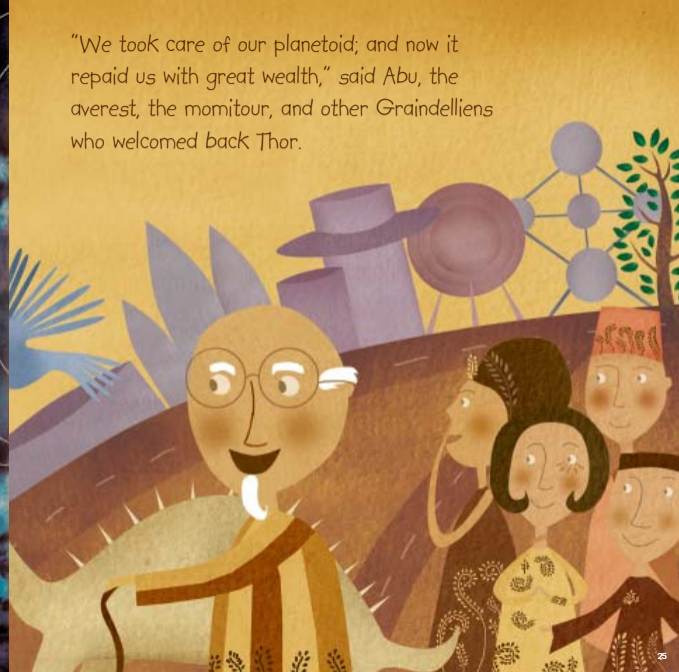
There lived in the planetoid two boys, Abu and Thor. They were best friends. They read and played together all day. Looking through their merryscopes, they shared big dreams. Like turning their Graindell into the greatest planetoid in the galaxy someday.




Abu and Thor had pets. Thor kept a cuddly averest, a bird. Abu had a momitour, a dinosaur.


Thor liked making star charts. Abu liked doing experiments with water, soil, and plants.

"We took care of our planetoid; and now it repaid us with great wealth," said Abu, the averest, the momitour, and other Graindelliens who welcomed back Thor.



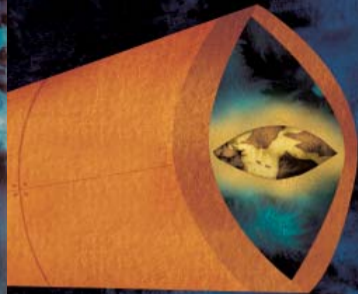


Thor was very surprised when he realized he had landed on Graindell. He could not believe that his former home had changed so much. "What happened here?" he asked.



"I am going to be a great astronomer," said Thor. "I shall be the best farmer of Graindell," said Abu.

Both tried hard to make their dreams come true. Thor built a spacecium which could fly anywhere in the galaxy.



Thor rode into his spacecium and zoomed into the direction of the planetoid shaped like a little eye.



Meanwhile, Thor grew old and very rich in Grandolium. But he missed his old home in Graindell, his best friend Abu, and his averest. One day, while looking through his merryscope, he saw a golden planetoid calling him to come over.



Abu built a diggerdome, a supermega planter which can plant graindell anywhere.



With his spacecium, Thor reached Grandolium, a richer planetoid which was a few light years away from Graindell. Thor wanted to live in the rich planetoid.

He invited Abu to join him in Grandolium. "There's nothing for us here in Graindell anyway," Thor told Abu. But Abu had other plans.





The Graindelliens began building houses and markets; roads and bridges; and schools, libraries, laboratories, and gyms for children.

A few more years of hard work, and with the help of their leaders, they succeeded in developing their planetoid which soon glowed like gold from the farthest corner of the galaxy.



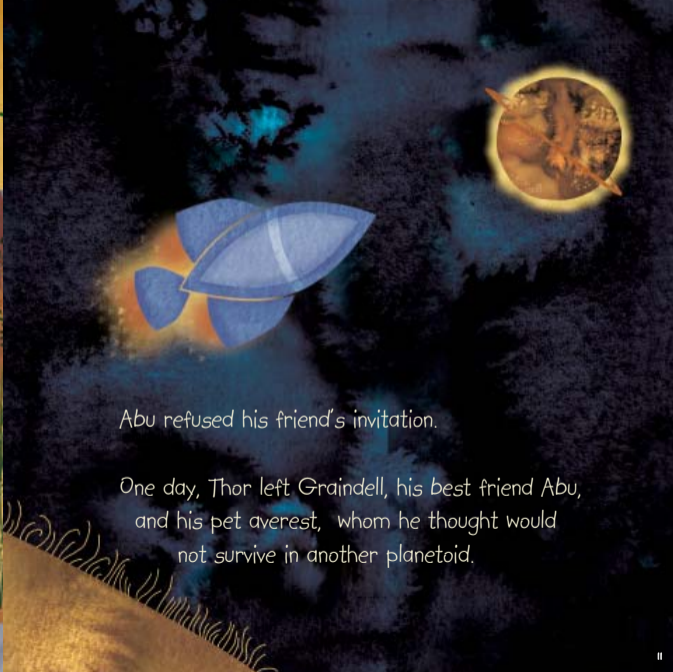


With everyone working together, they were able to develop better and stronger graindells. Their harvest began to improve. The planetoid started to develop.



Abu refused his friend's invitation.

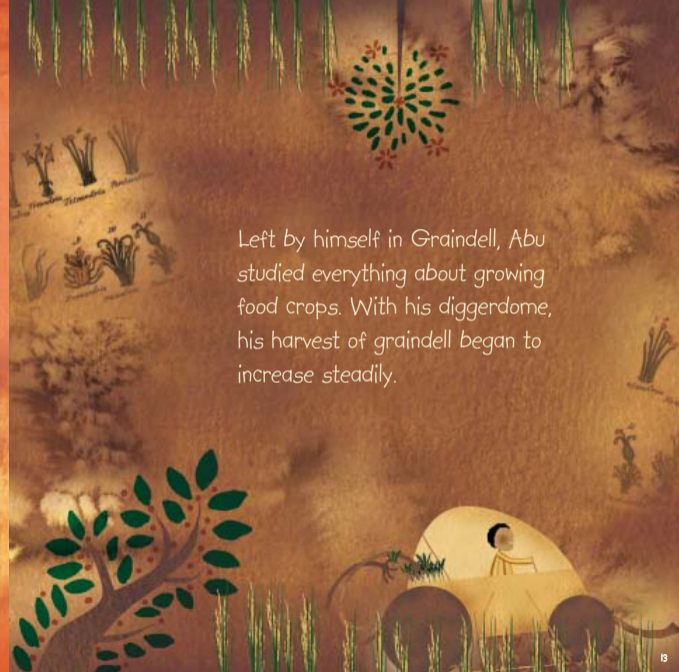
One day, Thor left Graindell, his best friend Abu, and his pet averest, whom he thought would not survive in another planetoid.







He also learned more about graindells from birds and insects.



Left by himself in Graindell, Abu studied everything about growing food crops. With his diggerdome, his harvest of graindells began to increase steadily.

"We can improve our planetoid, if we try a bit more,"
Abu told himself.

He asked the help of other farmers and
scientists.

